

**DOCUMENT 00 90 00
ADDENDUM**

ADDENDUM NO. [1] Date: May 19, 2020

**RE: WESTERN TECHNICAL COLLEGE
 KUMM CENTER STUDENT LIFE RENOVATION
 400 6TH STREET NORTH
 LA CROSSE, WI 54601
 HSR PROJECT NO. 20005**

**FROM: HSR Associates, Inc
 100 Milwaukee Street
 La Crosse, WI 54603
 (608) 784-1830**

To: Prospective Bidders

This addendum forms a part of the Contract Documents and modifies the original Bidding Documents dated May 2020. Acknowledge receipt of this Addendum in the space provided on the bid form. Failure to do so may subject the Bidder to disqualification.

This Addendum consists of [1] page and [2] 30 x 42 drawings.

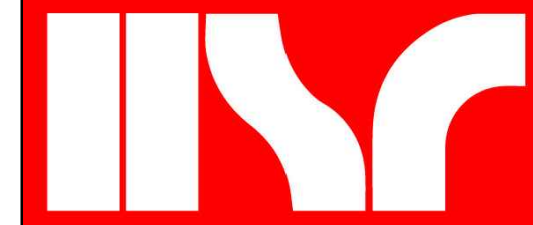
CHANGES TO DRAWINGS

1. Sheet E001 ELECTRICAL REMOVAL PLANS
 - a. Revisions clouded on Drawing.
 - b. Keyed note #19 has been revised.

2. Sheet E101 ELECTRICAL REMODEL PLANS
 - a. Revisions clouded on Drawing.
 - b. Relocate fire alarm notification device located in Storage Room #100F. Relocate existing fire alarm notification device from inside Storage Room #100F to the exterior West Side of Storage Room #100F as indicated, extend existing fire alarm system wiring in EMT conduit as required

END OF DOCUMENT 00 90 00

Page Intentionally Left Blank

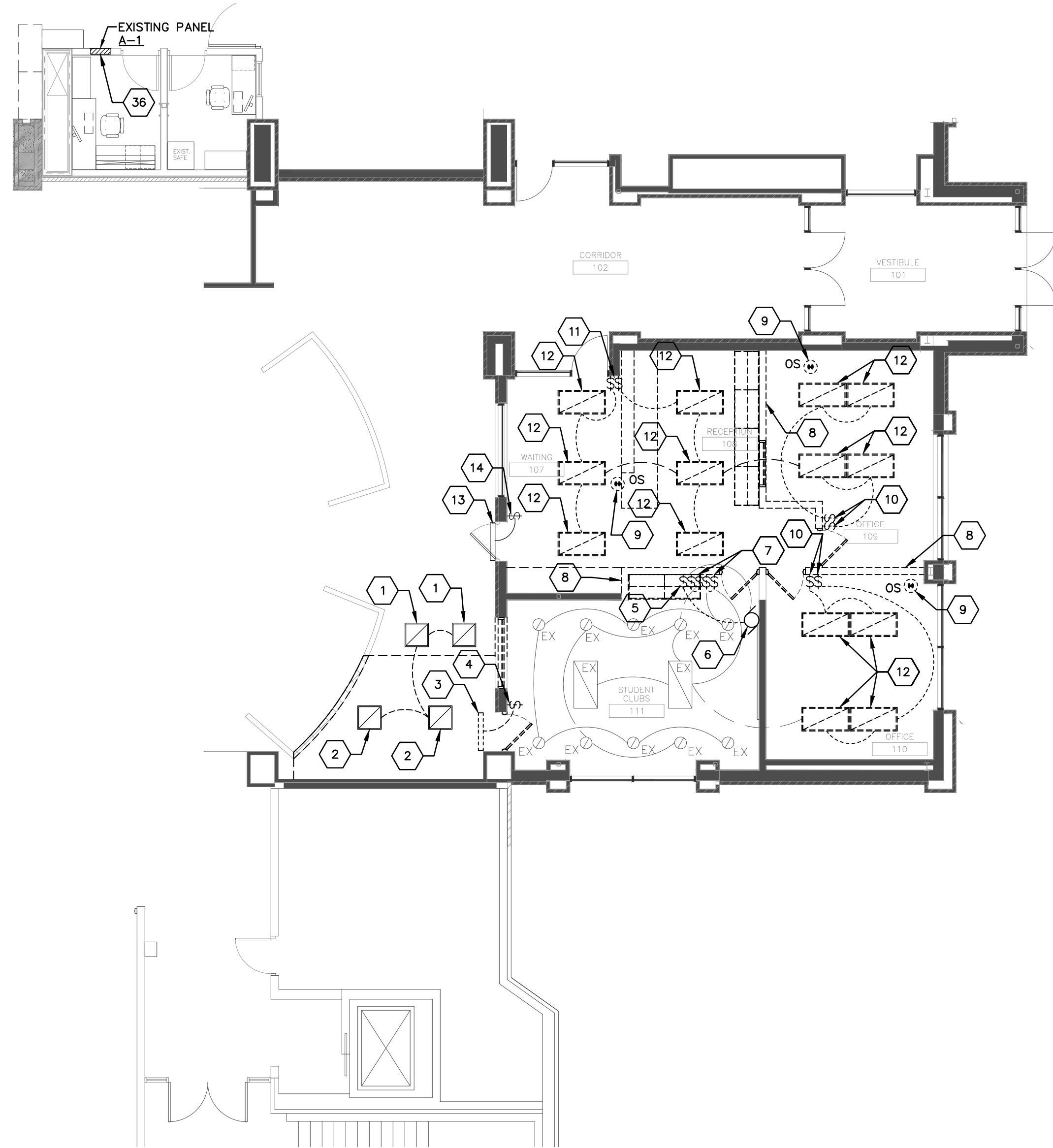


Consultant:

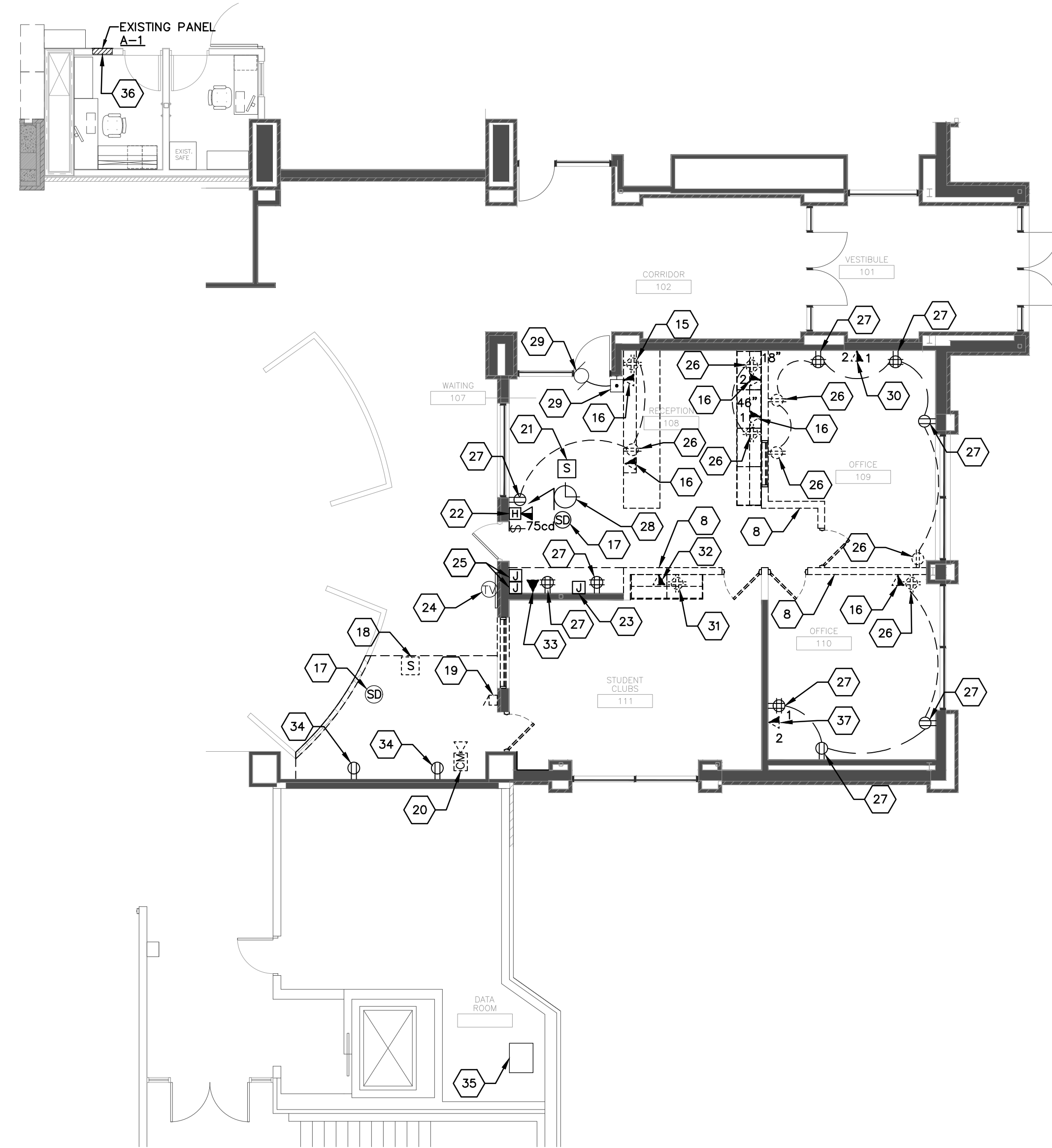


200 RICE AVENUE SUITE 100
LA CROSSE, WISCONSIN 54601
PHONE: 608.787.5444 FAX: 608.787.5444
WWW.GALILEOCONSULTING.COM

Project Title: WESTERN TECHNICAL COLLEGE
KUMM CENTER- STUDENT LIFE RENOVATION
Project Location: 7th St N
La Crosse, Wisconsin 54601
Sheet Title: ELECTRICAL REMOVAL PLANS



1 LIGHTING REMOVAL PLAN
SCALE: 1/8" = 1'-0" 120-05-E-LP01-DEMO



2 POWER REMOVAL PLAN
SCALE: 1/8" = 1'-0" 120-05-E-PP01-DEMO

GENERAL REMOVAL PLAN NOTES:

- DEMOLITION DRAWINGS ARE BASED ON CASUAL FIELD OBSERVATION AND/OR EXISTING RECORD DOCUMENTS.

KEYED ELECTRICAL POWER AND LIGHTING REMOVAL PLAN NOTES E001:

- EXISTING 2'X2' FLUORESCENT LIGHTING FIXTURE TO REMAIN AS IS. DISCONNECT SWITCH-LEG WIRING TO TWO (2) 2'X2' LIGHTING FIXTURES IN NEW STORAGE ROOM.
- DISCONNECT, REMOVE AND DISPOSE OF EXISTING 2'X2' FLUORESCENT LIGHTING FIXTURE. A NEW LED 2'X2' LIGHTING FIXTURE WILL BE INSTALLED IN SAME LOCATION. REUSE EXISTING JUNCTION BOX AND FIXTURE WHIP TO THE EXTENT POSSIBLE. IF LIGHTING FIXTURES IS A 'SLAVE' FIXTURE PROVIDE ADDITIONAL CONDUIT, JUNCTION BOX AND FIXTURE WHIP AS REQUIRED. REFER TO LIGHTING PLAN **1/E101**.
- DISCONNECT, REMOVE AND REINSTALL ILLUMINATED SIGN AS NOTED ON LIGHTING PLAN **1/E101**. REFER TO PHOTO **#5/E102**. PROVIDE A BLANK STAINLESS STEEL COVER PLATE FOR JUNCTION BOX.
- EXISTING SINGLE-POLE LIGHT SWITCH CONTROLLING ILLUMINATED SIGN SHALL REMAIN AS IS. EXTEND SWITCH-LEG WIRING TO RELOCATED SIGN LOCATION AS REQUIRED.
- DISCONNECT, REMOVE AND SALVAGE EXISTING UP/DOWN SWITCH FOR MOTORIZED PROJECTION SCREEN. REINSTALL SWITCH AS NOTED ON ELECTRICAL POWER PLAN **1/E101**. EXTEND EXISTING BRANCH-CIRCUIT WIRING FROM DEMOLISHED WALL TO NEW CONSTRUCTED WALL. REFER TO PHOTO **#9/E102**.
- EXISTING MOTORIZED PROJECTION SCREEN TO REMAIN AS IS.
- DISCONNECT, REMOVE AND SALVAGE EXISTING SINGLE-POLE LIGHT SWITCHES CONNECTED TO EXISTING LIGHTING FIXTURES IN STUDENT'S CLUB ROOM. REINSTALL SWITCHES IN NEW WALL AS NOTED ON ELECTRICAL LIGHTING PLAN **1/E101**. EXTEND EXISTING BRANCH-CIRCUIT WIRING, SWITCH-LEG WIRING, ETC. FROM DEMOLISHED WALL TO NEW CONSTRUCTED WALL. REFER TO PHOTO **#9/E102**.
- THIS WALL TO BE DEMOLISHED, DISCONNECT AND REMOVE ALL WIRING DEVICES AND ASSOCIATED CONDUIT, JUNCTION BOXES, ETC. REUSE EXISTING LINE VOLTAGE BRANCH-CIRCUIT WIRING TO THE EXTENT POSSIBLE.
- DISCONNECT, REMOVE AND DISPOSE OF EXISTING CEILING MOUNTED OCCUPANCY SENSOR AND ASSOCIATED POWER PACK. EXTEND EXISTING BRANCH-CIRCUIT WIRING TO NEW ROOM CONTROLLER.
- DISCONNECT, REMOVE AND DISPOSE OF EXISTING SINGLE-POLE LIGHT SWITCHES CONTROLLING INBOARD AND OUTBOARD LAMPS OF EXISTING FLUORESCENT LIGHTING FIXTURES TO BE REMOVED. EXISTING WALL TO BE DEMOLISHED, REMOVE ALL CONDUIT, JUNCTION BOXES, SWITCH-LEG WIRING, ETC. TO ABOVE SUSPENDED CEILING.
- DISCONNECT, REMOVE AND DISPOSE OF EXISTING SINGLE-POLE LIGHT SWITCHES AND ASSOCIATED SWITCH-LEG WIRING CONTROLLING FLUORESCENT LIGHTING FIXTURES TO BE REMOVED IN WAITING ROOM AREA. REFER TO PHOTO **#15/E102**.
- DISCONNECT, REMOVE AND DISPOSE OF EXISTING 2' X 4', 3-LAMP, FLUORESCENT LAY-IN LIGHT FIXTURE. REUSE EXISTING CONDUIT, JUNCTION BOXES, BRANCH-CIRCUIT WIRING, AND FIXTURE WHIPS TO THE EXTENT AS POSSIBLE FOR REMODELING CONSTRUCTION.
- EXISTING ILLUMINATED SIGN TO REMAIN AS IS. REFER TO PHOTO **#1/E102**.
- EXISTING SINGLE-POLE LIGHT SWITCH CONTROLLING ILLUMINATED SIGN TO REMAIN AS IS.
- DISCONNECT, REMOVE AND REINSTALL EXISTING DOUBLE DUPLEX RECEPTACLE IN NEW WALL LOCATED ADJACENT TO THIS WALL AS NOTED ON POWER PLAN **2/E101**. RE-WORK/EXTEND EXISTING BRANCH-CIRCUIT WIRING, CONDUIT, JUNCTION BOXES TO ACCOMMODATE NEW LOCATION IN REMODEL CONSTRUCTION.
- DISCONNECT, REMOVE AND DISPOSE OF EXISTING DATA JACK AND ASSOCIATED CONDUIT, JUNCTION BOX, ETC. PULL EXISTING CATSE WIRE BACK TO EQUIPMENT RACK LOCATED IN DATA ROOM, DO NOT ABANDON IN PLACE.
- EXISTING FIRE ALARM SYSTEM SMOKE DETECTOR SHALL REMAIN AS IS. PLEASE NOTE EXISTING SUSPENDED CEILING WILL BE REMOVED AND A NEW SUSPENDED CEILING TO BE INSTALLED IN SAME LOCATION.
- DISCONNECT, REMOVE AND REINSTALL EXISTING PUBLIC ADDRESS SYSTEM SPEAKER APPROXIMATELY 2'-0" TO THE EAST. COORDINATE WITH WTC IT DEPARTMENT.
- DISCONNECT, REMOVE AND REINSTALL EXISTING FIRE ALARM NOTIFICATION DEVICE AS NOTED ON LOW VOLTAGE PLAN **3/E101**. PROVIDE A BLANK STAINLESS STEEL COVER PLATE. REFER TO PHOTO **#3/E102 & #4/E102**.
- DISCONNECT, REMOVE AND SALVAGE EXISTING SECURITY CAMERA TO WTC IT DEPARTMENT. REMOVE EXISTING CATSE WIRING BACK TO EQUIPMENT RACK LOCATED IN DATA ROOM, DO NOT ABANDON WIRING IN PLACE.
- EXISTING PUBLIC ADDRESS SPEAKER TO REMAIN AS IS. PLEASE NOTE A NEW SUSPENDED ACOUSTIC CEILING INSTALLED IN SAME LOCATION.
- EXISTING FIRE ALARM SYSTEM NOTIFICATION DEVICE TO REMAIN AS IS. REFER TO PHOTO **#14/E102**.
- EXISTING SINGLE GANG JUNCTION BOX TO REMAIN AS IS. PROVIDE A BLANK SINGLE GANG STAINLESS STEEL COVER PLATE. REFER TO PHOTO **#11/E102**.
- EXISTING WALL MOUNTED MONITOR TO REMAIN AS IS. REFER TO PHOTO **#1/E102**.
- EXISTING SINGLE GANG JUNCTION BOX AND DOUBLE GANG JUNCTION BOX TO REMAIN AS IS. PROVIDE BLANK STAINLESS STEEL COVER PLATE. REFER TO PHOTO **#13/E102**.
- DISCONNECT, REMOVE AND DISPOSE OF EXISTING DUPLEX/DOUBLE DUPLEX RECEPTACLE. WALL TO BE DEMOLISHED, REMOVE ALL ASSOCIATED CONDUIT, JUNCTION BOXES, WIRING, ETC.
- EXISTING DUPLEX/DOUBLE DUPLEX RECEPTACLE TO REMAIN AS IS.
- EXISTING CLOCK TO REMAIN AS IS. REFER TO PHOTO **#14/E102**.
- EXISTING MOTORIZED DOOR OPENER AND ASSOCIATED HARD WIRED PUSH PLATE TO REMAIN AS IS. REFER TO PHOTO **#15/E102**.
- DISCONNECT, REMOVE AND DISPOSE OF EXISTING DATA JACK. REMOVE EXISTING CATSE CABLE BACK TO IT EQUIPMENT RACK LOCATED IN DATA ROOM, DO NOT ABANDON IN PLACE. REUSE JUNCTION BOX AND CONDUIT STUB FOR NEW DATA JACKS AS SHOWN ON LOW VOLTAGE PLAN **3/E101**.
- DISCONNECT, REMOVE AND REINSTALL EXISTING DOUBLE DUPLEX RECEPTACLE AS NOTED ON POWER PLAN **2/E101**. WALL TO BE DEMOLISHED, REMOVE ALL ASSOCIATED CONDUIT, JUNCTION BOXES, WIRING, ETC. AND REINSTALL IN NEW WALL CONSTRUCTION. REUSE EXISTING BRANCH-CIRCUIT WIRING, JUNCTION BOXES, CONDUIT, ETC. TO THE EXTENT POSSIBLE. REFER TO PHOTO **#10/E102**.
- DISCONNECT, REMOVE AND DISPOSE OF EXISTING DATA JACK AND ASSOCIATED CONDUIT, JUNCTION BOX, ETC. PULL EXISTING CATSE WIRE BACK TO EQUIPMENT RACK LOCATED IN DATA ROOM, DO NOT ABANDON IN PLACE. REFER TO PHOTO **#12/E102**. SALVAGE EXISTING WIRELESS ACCESS POINT TO WTC IT DEPARTMENT FOR REINSTALLATION.
- DISCONNECT, REMOVE AND DISPOSE OF EXISTING DATA JACK. REMOVE EXISTING CATSE WIRE BACK TO EQUIPMENT RACK LOCATED IN DATA ROOM, DO NOT ABANDON IN PLACE. PROVIDE A BLANK STAINLESS STEEL COVER PLATE FOR UNUSED JUNCTION BOX. REFER TO PHOTO **#12/E102**.
- EXISTING DUPLEX RECEPTACLE TO REMAIN AS IS. REMOVE EXISTING PLUG-IN POWER STRIP. REFER TO PHOTOS **#6/E102 AND #7/E102**.
- APPROXIMATE LOCATION OF EXISTING DATA EQUIPMENT RACK.
- APPROXIMATE LOCATION OF EXISTING SQUARE 'D', 42 SPACE PANELBOARD 'A-1'. ELECTRICAL CONTRACTOR IS RESPONSIBLE TO PROVIDE ADDITIONAL BRANCH-CIRCUIT WIRING FOR REMODELING PROJECT PER NEC LOAD REQUIREMENTS. REUSE EXISTING BRANCH-CIRCUITS TO THE EXTENT POSSIBLE. REFER TO PHOTO **#2/E102**. PLEASE NOTE THERE IS NO CIRCUIT DIRECTORY FOR THIS PANELBOARD, FIELD VERIFY EXISTING BRANCH-CIRCUIT WIRING PRIOR TO SUBMITTING BID IF REQUIRED.
- DISCONNECT, REMOVE AND DISPOSE OF EXISTING DATA JACK. REMOVE EXISTING CATSE WIRE BACK TO EQUIPMENT RACK LOCATED IN DATA ROOM, DO NOT ABANDON IN PLACE. PROVIDE A BLANK STAINLESS STEEL COVER PLATE FOR UNUSED JUNCTION BOX.

DATA AND COMMUNICATION EQUIPMENT

- CLOCK (DOUBLE) DP - DOUBLE FACE

DISTRIBUTION EQUIPMENT

- BRANCH CIRCUIT PANEL

FIRE ALARM SYSTEM

- SMOKE DETECTOR
- F.A. HORN

LIGHTING

- RECESSED FLUORESCENT FIXTURE. SEE LIGHTING FIXTURE SCHEDULE. 'A' INDICATES FIXTURE TYPE, 'S' INDICATES SWITCH CONTROL.
- SURFACE FLUORESCENT FIXTURE. SEE LIGHTING FIXTURE SCHEDULE. 'A' INDICATES FIXTURE TYPE, 'S' INDICATES SWITCH CONTROL.
- SURFACE-MOUNTED FIXTURE-SEE LIGHTING FIXTURE SCHEDULE FOR DESCRIPTION AND MANUFACTURER. 'A' INDICATES FIXTURE TYPE.
- PENDANT-MOUNTED LIGHTING FIXTURE. 'A' INDICATES FIXTURE TYPE.
- RECESS-MOUNTED DOWNLIGHT-SEE LIGHTING FIXTURE SCHEDULE FOR DESCRIPTION AND MANUFACTURER. 'A' INDICATES FIXTURE TYPE.

MOTORS AND EQUIPMENT

- MOTOR. SEE POWER AND EQUIPMENT SCHEDULE.

RACEWAY

- LOW VOLTAGE CIRCUIT
- JUNCTION BOX

RECEPTACLES

- DUPLEX RECEPTACLE WITH 3 WIRE GROUNDING
- FOUR-PLEX (DOUBLE DUPLEX) RECEPTACLE
- SURFACE-MOUNTED "PLUG MOLD" TYPE, MOUNTING HEIGHT & RECDPT. LOCATIONS AS INDICATED

SECURITY EQUIPMENT

- CAMERA. NEW CAMERA. EXM - EXISTING CAMERA.

SOUND SYSTEM

- SPEAKER ONLY (WALL-MOUNTED)
- SPEAKER ONLY (CEILING-MOUNTED)

SWITCHES

- WALL SWITCH SINGLE POLE SINGLE THROW (SPST) LETTER INDICATES SPECIAL FEATURE
- 3 - 3-WAY SWITCH
- 4 - 4-WAY SWITCH
- DN - DIMMER
- DPST - DOUBLE POLE SINGLE THROW
- HP - HEAT FUSIBLE
- M - MANUAL MOTOR STARTER
- ME - MECHANICAL CONTACT SWITCH
- PC - PHOTO EYE SENSOR
- SM - SURFACE-MOUNTED
- T - TIMER SWITCH, REG. & MODEL # AS INDICATED
- TP - MANUAL MOTOR SWITCH, SINGLE PHASE
- VS - VARIABLE SPEED MOTOR
- V - 120 VOLT 50 AMP MOTOR RATED
- WP - WATER PROOF
- WP - EXISTING OUTLET BOX WITH NEW SWITCH

NOTES: LOWER CASE LETTERS INDICATE MULTIPLE LEVELS OF LIGHT CONTROL OF FIXTURES WITH CORRESPONDING LETTERS INDICATED ON FIXTURES.

- OS - CEILING MOUNTED OCCUPANCY SENSOR

Project Title: WESTERN TECHNICAL COLLEGE
KUMM CENTER- STUDENT LIFE RENOVATION
Project Location: 7th St N
La Crosse, Wisconsin 54601
Sheet Title: ELECTRICAL REMOVAL PLANS

Project Number: HSR Project Number:

Project Date: MAY 2020

Drawn By: GALILEO

Key Plan:

| No. | Description | Date |
|-----|-------------|---------|
| 1 | ADDENDUM #1 | 5-19-20 |

| No. | Description | Date |
|-----|-------------|---------|
| 1 | ADDENDUM #1 | 5-19-20 |

Graphic Scale: VARIES

Last Update: 5/04/2020 4:40:10 PM

E001

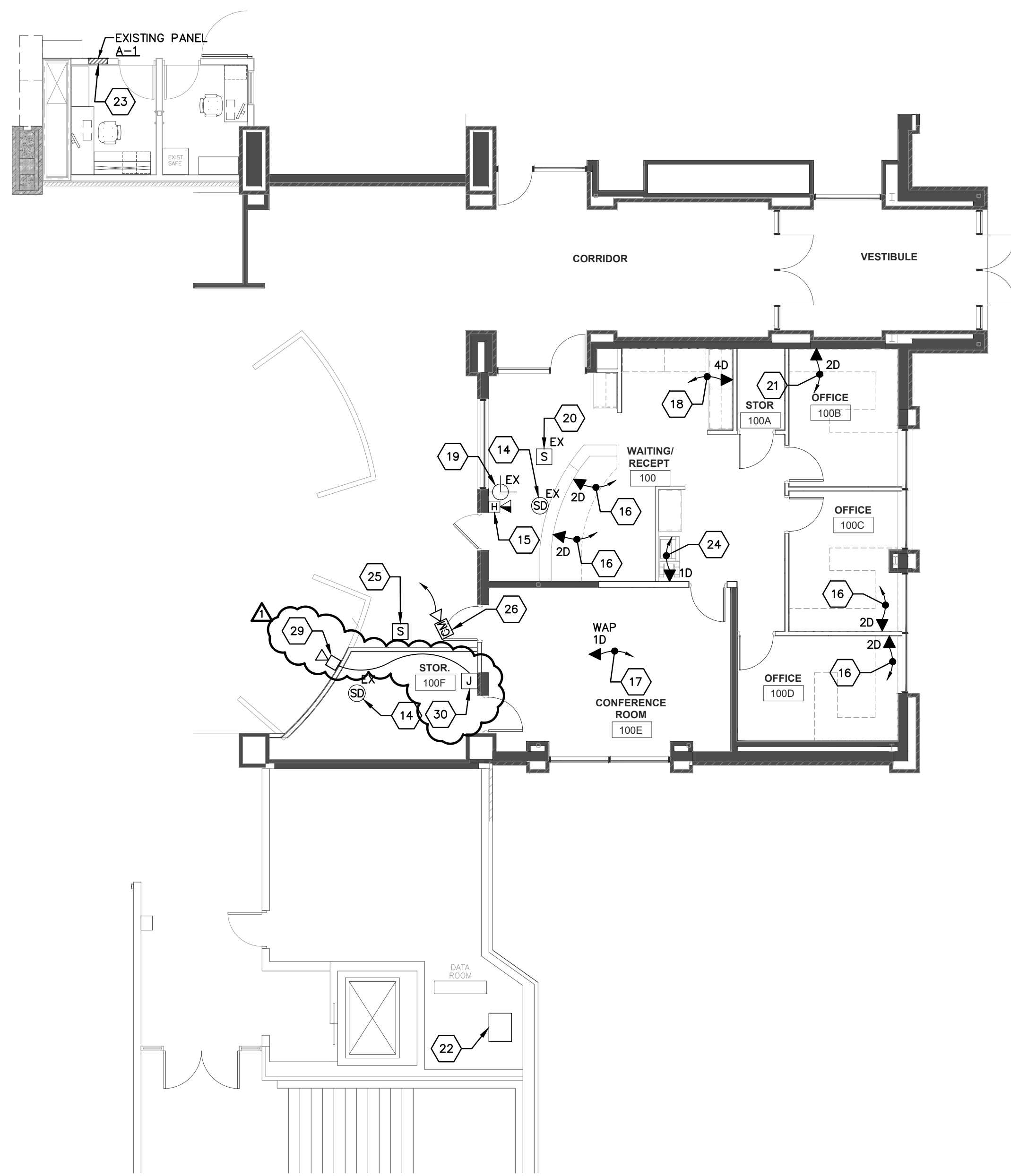


| No. | Description | Date |
|-------------|-------------|---------|
| ADDENDUM #1 | | 5-19-20 |

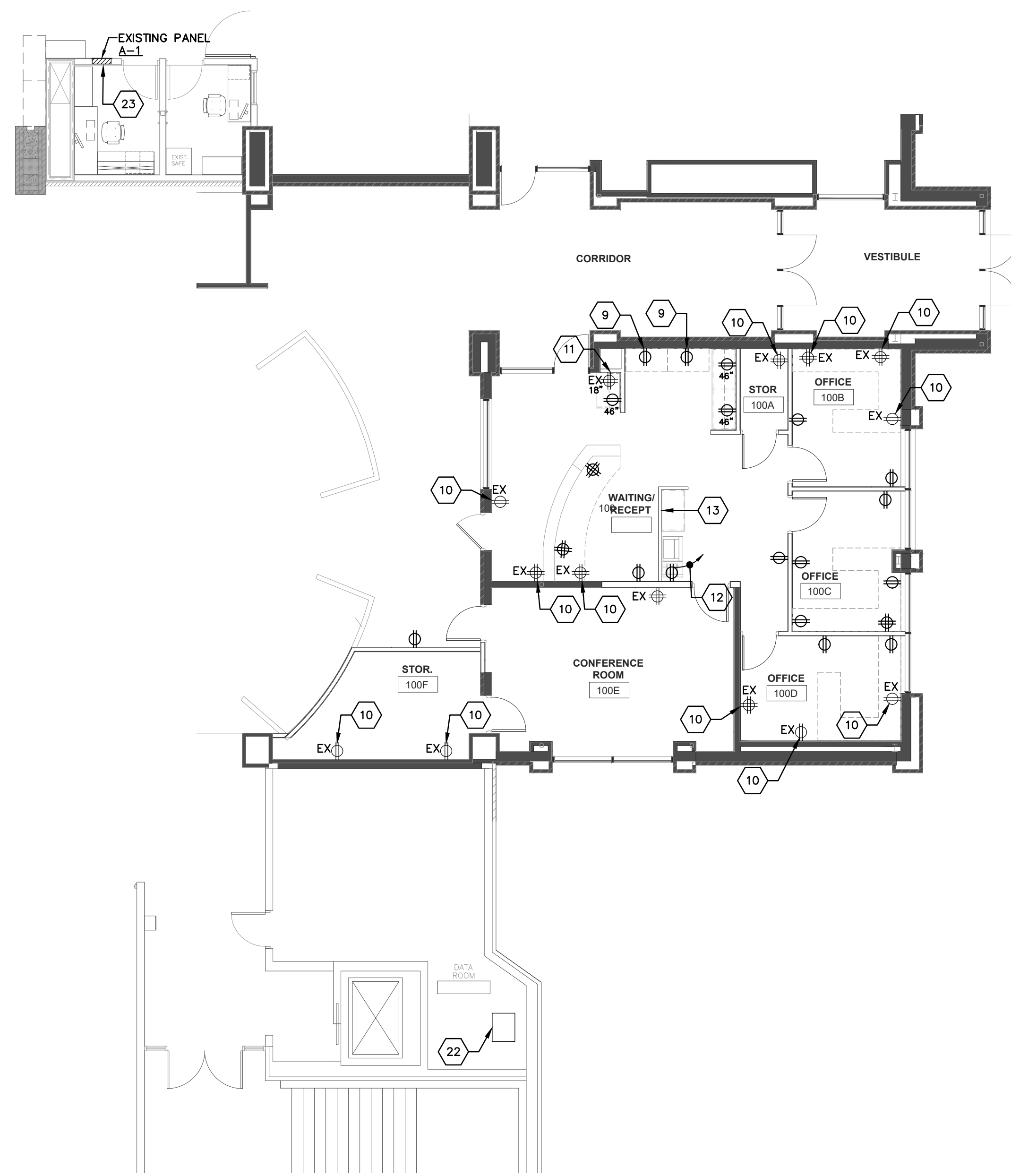
Graphic Scale: VARIES

Last Update: 5/04/2020 4:40:10 PM

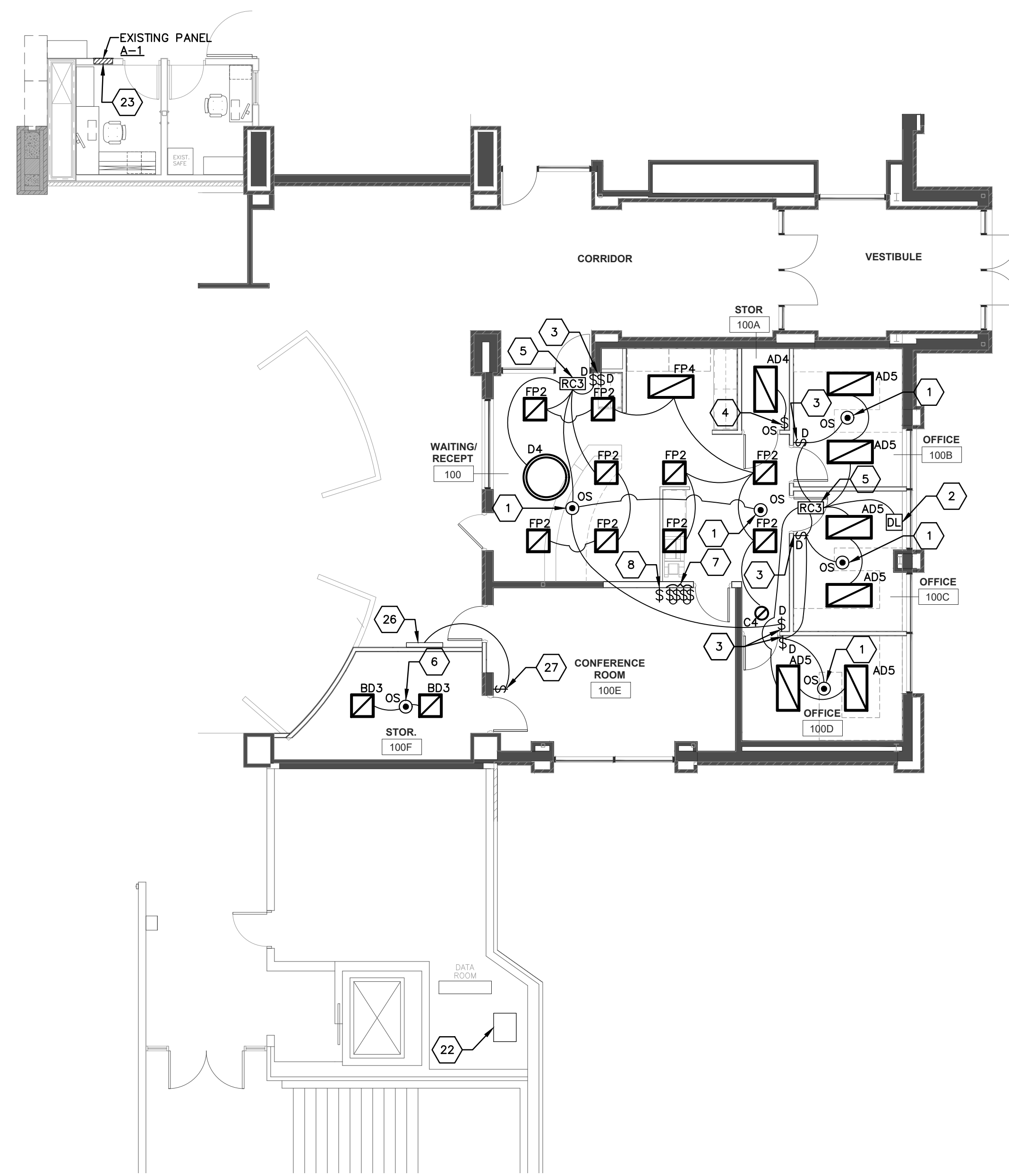
E101



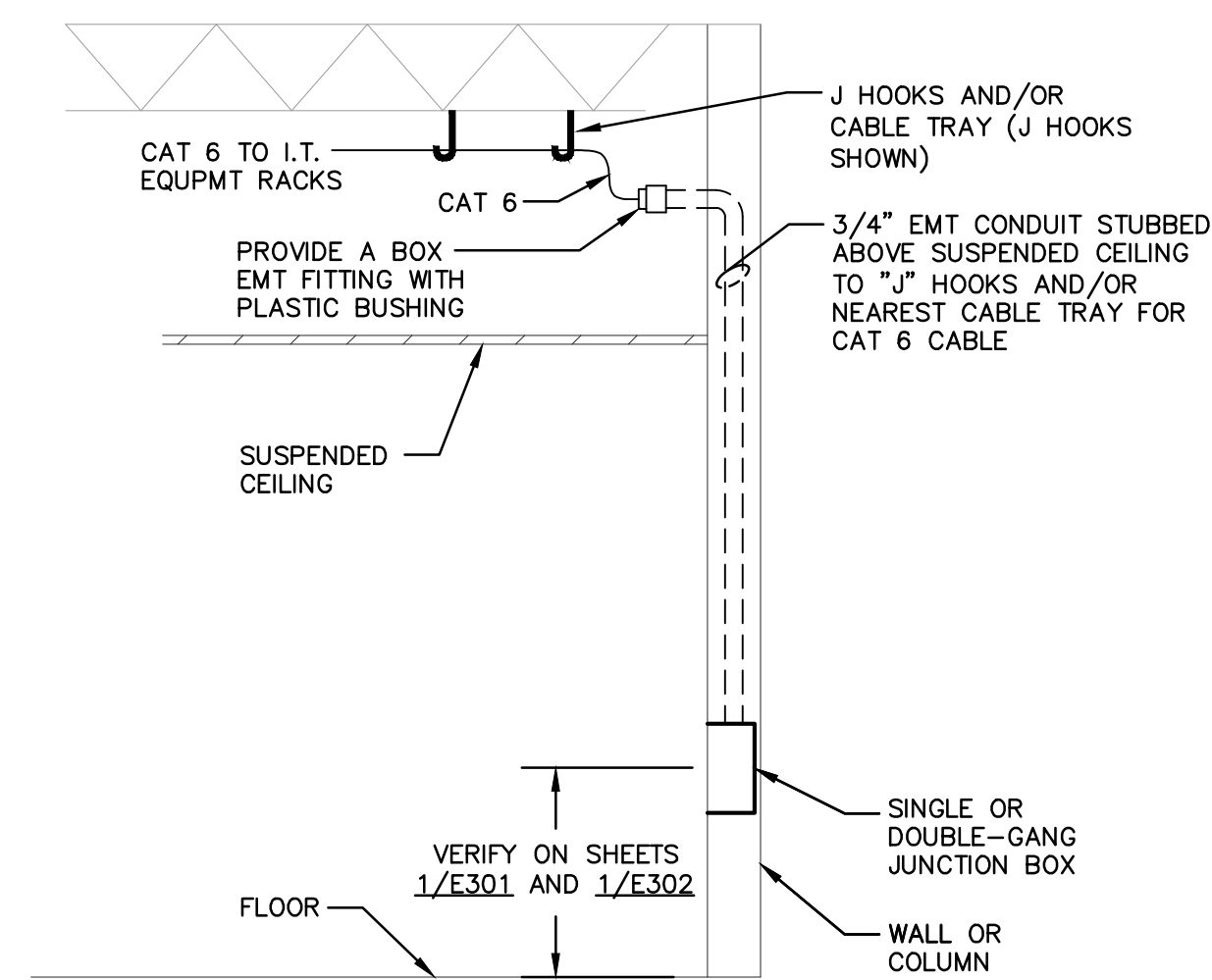
3 LOW VOLTAGE PLAN
E101 SCALE: 1/8" = 1'-0" 120-05-E-LV01



2 POWER PLAN
E101 SCALE: 1/8" = 1'-0" 120-05-E-PP01



1 LIGHTING PLAN
E101 SCALE: 1/8" = 1'-0" 120-05-E-LP01



4 TELECOM JUNCTION BOX DETAIL
E101 SCALE: 1/8" = 1'-0" 120-05-E-TELECOM_BOX DETL

LIGHTING FIXTURE SCHEDULE

| TYPE | QTY | MANUFACTURER | CATALOG NUMBER | DESCRIPTION | VOLT | MOUNTING | | | LED LIGHT SOURCE - SPECS | | | WATTS / FIXTURE | REMARKS |
|------|-----|--------------|---|---|---------|----------|---|---|--------------------------|------------|----------------|-----------------|---------|
| | | | | | | F | S | * | LUMENS | COLOR TEMP | DIMMABLE | | |
| AD4 | | COOPER | 24CZ-LD5-50SE-UNV-L840-CD1-U | 2X4 LED LAYIN TROFFER | 120/277 | X | | | 5088 | 4000K | YES, 0-10 VOLT | 47 | 1 |
| AD5 | | COOPER | 24CZ-LD5-50SE-UNV-L840-CD1-U | 2X4 LED LAYIN TROFFER | 120/277 | X | | | 5088 | 4000K | YES, 0-10 VOLT | 47 | 1 |
| BD3 | | COOPER | 22CZ-LD5-32SE-UNV-L840-CD1-U | 2X2 LED LAYIN TROFFER | 120/277 | X | | | 3267 | 4000K | YES, 0-10 VOLT | 31 | 1 |
| C4 | | HALO | H457-TAT-E010-EL406-9-40-TL410SC | 4" DIAMETER LED RECESSED CAN | 120/277 | X | | | 860 | 4000K | YES, 0-10 VOLT | 13 | 1 |
| D4 | | EUREKA | 4800-54-LED-40-120V-DV-RDP-AC-60-RC-RCC-WHM-WHM-3981C | SUSPENDED EXTERNAL RING 54" DIA, WHITE, LED | 120 | | | X | 4470 | 4000K | YES, 0-10 VOLT | 54 | 1 |
| FP2 | | METALUX | 22CGT3540C | 2X2 LED FLAT PANEL | 120 | X | | | 3582 | 4000K | YES, 0-10 VOLT | 31 | 1 |
| FP4 | | METALUX | 24CGT5540C | 2X4 LED FLAT PANEL | 120 | X | | | 5337 | 4000K | YES, 0-10 VOLT | 47 | 1 |

NOTES:

1. EQUAL FIXTURES WILL BE ACCEPTED.

GENERAL NOTES:

- LIGHTING CONTROL SYSTEM BASED UPON WATTSTOPPER MANUFACTURER. EQUALS NOT ALLOWED UNLESS NOTED OTHERWISE, THIS IS A CAMPUS WIDE STANDARD. REFER TO DETAILS ON SHEET E103.
- FOR ALL TELECOMMUNICATIONS OUTLETS - DATA JACKS AND CABLING WILL BE DESIGNATED ON THIS PLAN AS FOLLOWS:
 - NETWORKING (DATA) = ORANGE DATA JACKS WITH BLUE CAT 6 CABLES.
 - PHONE (PH) = ORANGE DATA JACKS WITH BLUE CAT 6 CABLES.
 - AUDIO/VIDEO (AV) - GREEN DATA JACKS WITH GREEN CAT 6 CABLE. ONLY ONE SET OF AV CABLES NEEDED FOR PROJECTORS AND MONITORS.
 - SECURITY CAMERAS (CAM) - WHITE JACKS WITH WHITE CAT 6 CABLES.
 - DOOR ACCESS - YELLOW CAT 6 CABLES.
 - FAX/ANALOG (ANA) - PURPLE JACKS WITH PURPLE CAT 6 CABLES.
- THE ELECTRICAL CONTRACTOR IS RESPONSIBLE TO PROVIDE EMPTY JUNCTION BOXES, CONDUIT STUBS TO ABOVE SUSPENDED CEILING TO 'J' HOOKS, AND CONDUIT SLEEVES THROUGH WALLS FOR LOW VOLTAGE CABLE ROUTING. THE INTENT IS FOR THE ELECTRICAL CONTRACTOR TO PROVIDE AN EMPTY RACEWAY SYSTEM PATH FOR LOW VOLTAGE WIRING PROVIDED AND INSTALLED BY WTC IT DEPARTMENT VENDOR.
- ELECTRICAL CONTRACTOR IS RESPONSIBLE TO PROVIDE ALL BRANCH-CIRCUIT WIRING AS REQUIRED PER NEC RULES. BRANCH-CIRCUITS ARE FED FROM EXISTING PANELBOARD 'A-1' LOCATED IN THE BOOK STORE. REUSE EXISTING BRANCH-CIRCUIT WIRING TO THE EXTENT POSSIBLE.

KEYED LIGHTING, POWER & LOW VOLTAGE REMODEL PLAN NOTES E101:

- PROVIDE CEILING MOUNTED DUAL TECH OCCUPANCY SENSOR TO INTERFACE WITH ROOM CONTROLLER. ROOM CONTROLLER IS EITHER A LMRC-211, LMRC-212 OR A LMRC-213. REFER TO INSTALLATION DETAILS ON SHEET E103. TYPICAL.
- PROVIDE ONE (1) WATTSTOPPER DAYLIGHT PHOTOSENSOR LMS 500 TO CONTROL LIGHT FIXTURES IN DAYLIGHT AREAS. PHOTOSENSOR SHALL INTERFACE WITH LMRC-211, LMRC-212, OR LMRC-213. LOCATE AND INSTALL AS RECOMMENDED BY MANUFACTURER. REFER TO INSTALLATION DETAILS ON SHEET E103.
- PROVIDE WATTSTOPPER LMDDM MULTILLOCATION 0-10VDC DIMMING CONTROLLER(S) TO INTERFACE WITH A LMRC-211, LMRC-212 OR LMRC-213. REFER TO INSTALLATION DETAILS ON SHEET E103.
- PROVIDE INFRARED SINGLE RELAY WALL-MOUNTED LINE VOLTAGE OCCUPANCY SENSOR, WATTSTOPPER PW-100.
- PROVIDE WATTSTOPPER LMRC-213, THREE RELAY, ON/OFF/D-10 VOLT DIMMING ROOM CONTROLLER SUITABLE FOR CONTROL OF LED. REFER TO INSTALLATION DETAILS ON SHEET E103. THIS SYMBOL IS TYPICAL FOR THIS CONTROLLER.
- PROVIDE A CEILING MOUNTED DUAL TECH LINE VOLTAGE OCCUPANCY SENSOR. SENSOR SHALL PROVIDE SHUT-OFF CONTROL FOR ALL LIGHT FIXTURES IN THIS ROOM. WATTSTOPPER, MODEL #D73000 SERIES, 82-50 POWER PACK.
- REINSTALL PREVIOUSLY REMOVED SINGLE-POLE LIGHT SWITCHES FOR EXISTING LIGHTING FIXTURES IN CONFERENCE ROOM. REFER TO PHOTO #9/E102.
- REINSTALL A PREVIOUSLY REMOVED UP/DOWN SWITCH FOR MOTORIZED PROJECTION SCREEN. REFER TO PHOTO #9/E102.
- PROVIDE A 20 AMP, 120VAC DUPLEX RECEPTACLE IN EXISTING SHEETROCK WALL, FISH FLEXIBLE CONDUIT INSIDE WALL AND PROVIDE A SINGLE-GANG CUT-IN JUNCTION BOX.
- EXISTING DUPLEX/DOUBLE DUPLEX RECEPTACLE TO REMAIN AS IS.
- REINSTALL A PREVIOUSLY REMOVED DOUBLE DUPLEX RECEPTACLE.
- PROVIDE A 20 AMP, 120VAC DUPLEX RECEPTACLE FOR COPY MACHINE. ELECTRICAL CONTRACTOR SHALL FIELD VERIFY LOAD FOR COPY MACHINE AND PROVIDE A DEDICATED 20 AMP, 120VAC BRANCH-CIRCUIT TO EXISTING PANELBOARD 'A-1' LOCATED IN BOOK STORE IF REQUIRED.
- EXISTING FIRE ALARM SYSTEM SMOKE DETECTOR TO REMAIN AS IS.
- EXISTING FIRE ALARM SYSTEM NOTIFICATION DEVICE TO REMAIN AS IS.
- WESTERN TECHNICAL COLLEGE SHALL PROVIDE AND INSTALL A TWO (2) PORT DATA JACK AT THIS APPROXIMATE LOCATION AND SHALL PROVIDE TWO (2) CAT 6 CABLES BETWEEN DATA JACKS AND IT EQUIPMENT RACK LOCATED IN DATA ROOM. ELECTRICAL CONTRACTOR IS RESPONSIBLE TO PROVIDE A JUNCTION BOX AND ONE (1) EMPTY "X" EMT CONDUIT STUBBED ABOVE SUSPENDED CEILING FOR TELECOMMUNICATIONS WIRING. REFER TO DETAIL 4/E101.
- WESTERN TECHNICAL COLLEGE SHALL PROVIDE ONE (1) CAT 6A CABLE BETWEEN DATA JACK IN CEILING FOR WIRELESS ACCESS POINT AND IT EQUIPMENT RACK LOCATED IN DATA ROOM. ELECTRICAL CONTRACTOR IS RESPONSIBLE TO PROVIDE A CEILING MOUNTED JUNCTION BOX AS DIRECTED BY WTC IT DEPARTMENT.
- WESTERN TECHNICAL COLLEGE SHALL PROVIDE AND INSTALL A FOUR (4) PORT DATA JACK AT THIS APPROXIMATE LOCATION AND SHALL PROVIDE FOUR (4) CAT 6 CABLES BETWEEN DATA JACKS AND IT EQUIPMENT RACK LOCATED IN NEAREST DATA ROOM. ELECTRICAL CONTRACTOR IS RESPONSIBLE TO PROVIDE A JUNCTION BOX AND TWO (2) EMPTY "X" EMT CONDUITS STUBBED ABOVE SUSPENDED CEILING FOR TELECOMMUNICATIONS WIRING. REFER TO DETAIL 4/E101 FOR DESIGN INTENT.
- EXISTING CLOCK TO REMAIN AS IS.
- EXISTING PUBLIC ADDRESS SYSTEM SPEAKER TO REMAIN AS IS.
- WESTERN TECHNICAL COLLEGE SHALL PROVIDE AND INSTALL A TWO (2) PORT DATA JACK AT THIS APPROXIMATE LOCATION AND SHALL PROVIDE TWO (2) CAT 6 CABLES BETWEEN DATA JACKS AND IT EQUIPMENT RACK LOCATED IN DATA ROOM. REUSE EXISTING JUNCTION BOX AND EMPTY "X" EMT CONDUIT STUBBED ABOVE SUSPENDED CEILING TO THE EXTENT POSSIBLE.
- APPROXIMATE LOCATION OF EXISTING IT EQUIPMENT RACK.
- APPROXIMATE LOCATION OF EXISTING SQUARE 'D' 42 SPACE, PANELBOARD. ELECTRICAL CONTRACTOR IS RESPONSIBLE TO REUSE EXISTING BRANCH-CIRCUIT WIRING TO THE EXTENT POSSIBLE FOR REMODEL PROJECT AND TO PROVIDE ADDITIONAL 20 AMP, 120VAC BRANCH-CIRCUITS FED FROM THIS PANELBOARD AS REQUIRED PER NEC REQUIREMENTS. PLEASE NOTE THIS PANELBOARD DOES NOT HAVE A CURRENT CIRCUIT DIRECTORY. REFER TO PHOTO #2/E102.
- WESTERN TECHNICAL COLLEGE SHALL PROVIDE AND INSTALL A ONE (1) PORT DATA JACK FOR COPY MACHINE AT THIS APPROXIMATE LOCATION AND SHALL PROVIDE ONE (1) CAT 6 CABLE BETWEEN DATA JACK AND IT EQUIPMENT RACK LOCATED IN DATA ROOM. ELECTRICAL CONTRACTOR IS RESPONSIBLE TO PROVIDE A JUNCTION BOX AND ONE (1) EMPTY "X" EMT CONDUIT STUBBED ABOVE SUSPENDED CEILING FOR TELECOMMUNICATIONS WIRING. REFER TO DETAIL 4/E101.
- ELECTRICAL CONTRACTOR SHALL REINSTALL A PREVIOUSLY REMOVED PUBLIC ADDRESS SPEAKER IN THIS APPROXIMATE LOCATION. EXTEND/RE-USE EXISTING LOW VOLTAGE WIRING TO THE EXTENT POSSIBLE.
- WTC IT DEPARTMENT SHALL INSTALL A SECURITY IP CCTV CAMERA IN THIS APPROXIMATE LOCATION. ELECTRICAL CONTRACTOR SHALL PROVIDE A CEILING MOUNTED JUNCTION BOX AS REQUIRED FOR MOUNTING CAMERA. WTC IT DEPARTMENT SHALL ALSO PROVIDE ONE (1) CAT 6 CABLE TO EQUIPMENT RACK LOCATED IN DATA ROOM. COORDINATE WITH WTC IT DEPARTMENT.
- REINSTALL A PREVIOUSLY REMOVED ILLUMINATED SIGN IN THIS LOCATION. INSTALLATION SHALL MATCH WHAT WAS PREVIOUSLY REMOVED.
- REUSE EXISTING SINGLE-POLE LIGHT SWITCH SWITCH LEG WIRING AND BRANCH-CIRCUIT WIRING TO CONTROL ILLUMINATED SIGN.
- REINSTALL A PREVIOUSLY REMOVED FIRE ALARM NOTIFICATION DEVICE TO THIS APPROXIMATE LOCATION.
- EXTEND EXISTING FIRE ALARM SYSTEM WIRING IN EMT CONDUIT FROM EXISTING JUNCTION BOX TO RELOCATED FIRE ALARM SYSTEM NOTIFICATION DEVICE.